



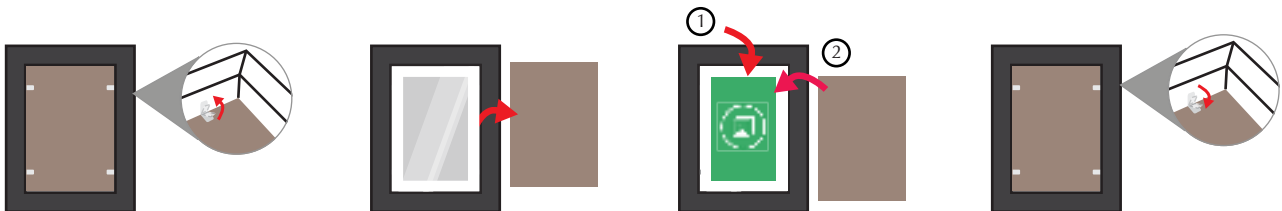
CARE & ASSEMBLING

Our frames come ready to hang out of the box, all you need to do is insert your own picture and attach the screw eyes/hooks. Below are a few tips on how to do this.

Inserting Pictures and Assembling Frame

To insert your pictures simply lift up the flexi pins found on the back of your frame which are pressing down the MDF board, take out the MDF board and pop in your picture. If your frame is using acrylic glass, you need to peel off the protective cover (brown colour) carefully.

You will notice that your frames arrive almost fully finished, after inserting your picture all you have to do is lift down the flexi pins. Done, now you just have to hang them, paying close attention to alignment.



Attaching a Picture to The Mount

When you ordered frame with mount, we deducted a few mm from the height and width automatically to make the installation easy for you. Take your photo mount and place it facing down on a flat and clean surface. Now, position your picture facing down on top of the mount. Your picture should overlap your mount opening slightly, allowing you to tape it down securely, so it doesn't move around in the frame. We recommend using normal sellotape for this process.

Cleaning Picture Frame

To clean wood or metal, use a feather duster or very soft cloth – DO NOT use potentially damaging household cleaners at any point.

Cleaning Acrylic Glass

NEVER spray a cleaner directly acrylic. To clean acrylic we recommend using a soft cloth and gently wiping it over the face without pressing down too hard.